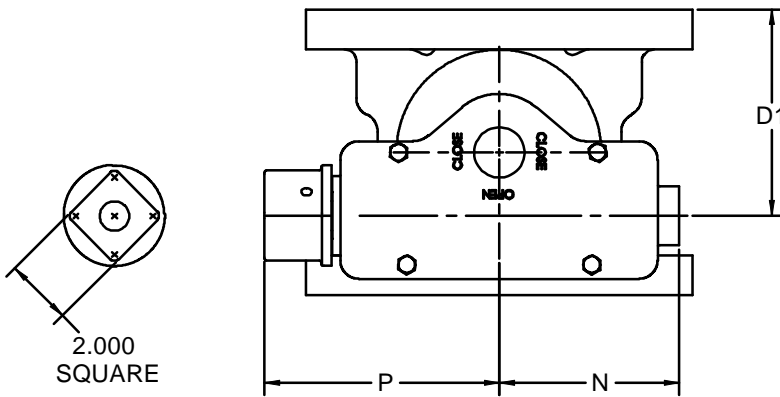
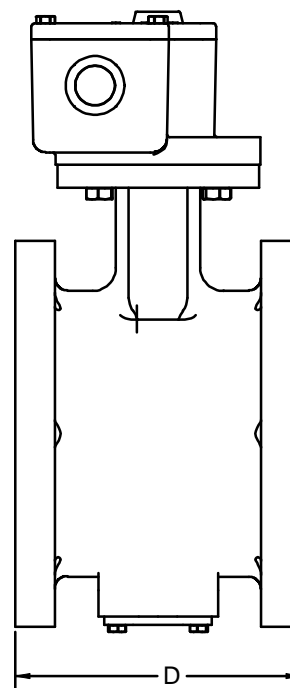
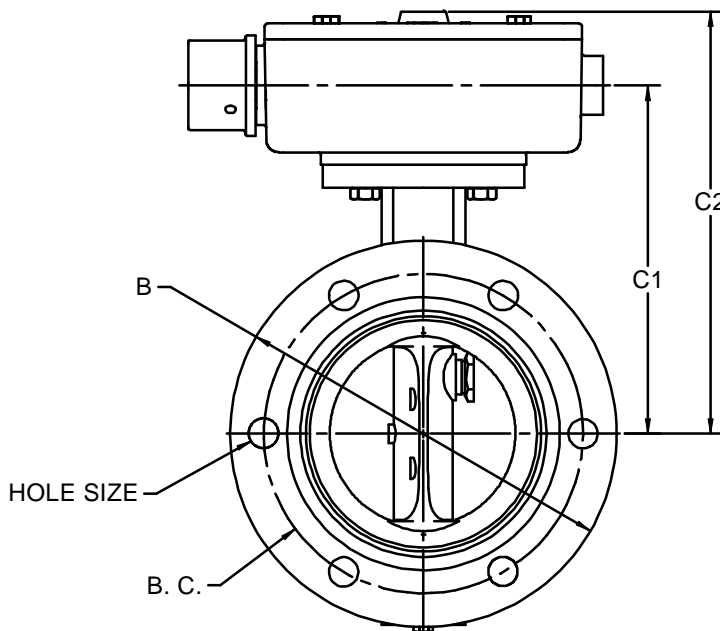
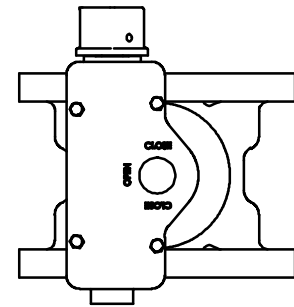


506 SERIES MJ X MJ, TNA OPERATOR WITH SQUARE NUT

VALVE DIMENSIONS								FLANGE DRILLING		
SIZE	B	C1	C2	D	D1	N	P	B. C.	HOLE SIZE	# OF HOLES
6"	11.500	10.375	12.438	8.500	5.875	5.188	7.250	9.500	0.875	6
8"	13.750	11.875	13.938	8.625	5.938	5.188	7.250	11.750	0.875	6
10"	16.063	13.125	15.188	9.250	6.250	5.188	7.250	14.000	0.875	8
12"	18.313	14.625	16.688	9.250	6.250	5.188	7.250	16.250	0.875	8
14"	20.688	17.063	19.313	11.500	9.250	7.250	9.250	18.750	0.875	10
16"	22.938	18.063	20.313	12.000	9.500	7.250	9.250	21.000	0.875	12
18"	25.250	19.563	21.812	12.250	9.625	7.250	9.250	23.250	0.875	12
20"	27.438	21.063	23.313	12.500	9.750	7.250	9.250	25.500	0.875	14



◆ OPTIONAL CONFIGURATION



NOTES:

1. VALVES ARE DESIGNED TO MEET AWWA C504.
2. MECHANICAL JOINT CONNECTIONS ARE PER ANSI B16.1, CLASS 125.
3. VALVES ARE DESIGNED FOR BI-DIRECTIONAL FLOW BUBBLE TIGHT SERVICE (AWWA C504 CLASS 150B).

K-FLO
 BUTTERFLY VALVES
 BY
 CRISPIN VALVES
 800-247-VALVE
 WWW.CRISPINVALVE.COM

506 SERIES VALVES
 TNA OPERATOR

REDRAWN: _____
 CHECKED: _____
 DRAWN: C. GEARY 05/28/09

SIZE **C** 506-TNA-SQ NUT REV 1